

Our Ref: 21_1124A_BRT Line 3-ECO
Your Ref: GAUT 25-26 0380
Date: 26 May 2026

DEAR INTERESTED AND AFFECTED PARTIES

RE: MAINTENANCE MANAGEMENT PLAN (MMP) FOR THE MAINTENANCE AND UPGRADE OF EXISTING STORMWATER LINES AND MANHOLES FOR THE CONSTRUCTION OF BRT LINE 3 AT PRINCE'S PARK AVENUE AND BUS STOPS/BAYS ALONG WF NKOMO STREET, PRETORIA, GAUTENG PROVINCE.

City of Tshwane Metropolitan Municipality (applicant) has commenced with the upgrading of the IRPTN Line 3 Operations Prince's Park and Bus Stops Bay along WF NKOMO Street, Pretoria. Project activities include rehabilitation and replacement of stormwater pipelines wherein there was a coordination of discharge Area for Stormwater line which included installation of a 525 mm diameter pipe over a distance of approximately 57m, and associated manhole works in proximity to the watercourse. The proposed study area can be accessed through W.F. Nkomo Street (formerly known as Church Street) and Prince Park Street. The coordinates to the site are **25°45'5.39"S 28°10'41.91"E**.

The proposed development requires Maintenance Management Plan (MMP) in terms of the National Environmental Management Act, 1998 (Act No. 107 of 1998) (NEMA). This is due to the triggering of listed activities under the Environmental Impact Assessment (EIA) Regulations, 2014 (as amended). The table below depicts all the activities that are triggered by the proposed development:

Triggered Listed Activities	
Environmental Impact Assessment (EIA) Regulations, 2014 (as amended)	
Listing Notice 1 - Activity 19	The infilling or depositing of any material of more than 10 cubic metres into, or the dredging, excavation, removal or moving of soil, sand, shells, shell grit, pebbles or rock of more than 10 cubic metres from a watercourse; but excluding where such infilling, depositing, dredging, excavation, removal or moving.

Listing Notice 3 - Activities 12	Activity 12: The clearance of an area of 300 square metres or more of indigenous vegetation except where such clearance of indigenous vegetation is required for maintenance purposes undertaken in accordance with a maintenance management plan.
----------------------------------	----------------------------------------------------------------------------------------------------------------------------------------------------------------------------------------------------------------------------------------------------

An opportunity is being provided for **Interested and Affected Parties (I&APs), Stakeholders, Landowners, and Organs of State** in terms of Regulation 41(2)(c) of the EIA Regulations, 2014 (as amended), to formally register as an Interested and Affected Party and to submit written comments on the proposed application.

Should you wish to submit comments on the Maintenance Management Plan application, Selahle Consultancy & Projects (Pty) Ltd urges that these written comments reach us before or on **Friday, 26 June 2026**. The comment period will run from **26 May 2026 to 26 June May 2026**.

Yours Sincerely



Sibongile Hamisi
Junior Environmental Consultant
SCP Environmental Division



APPENDIX A: SITE LOCALITY AND CONSERVATION PLAN MAPS

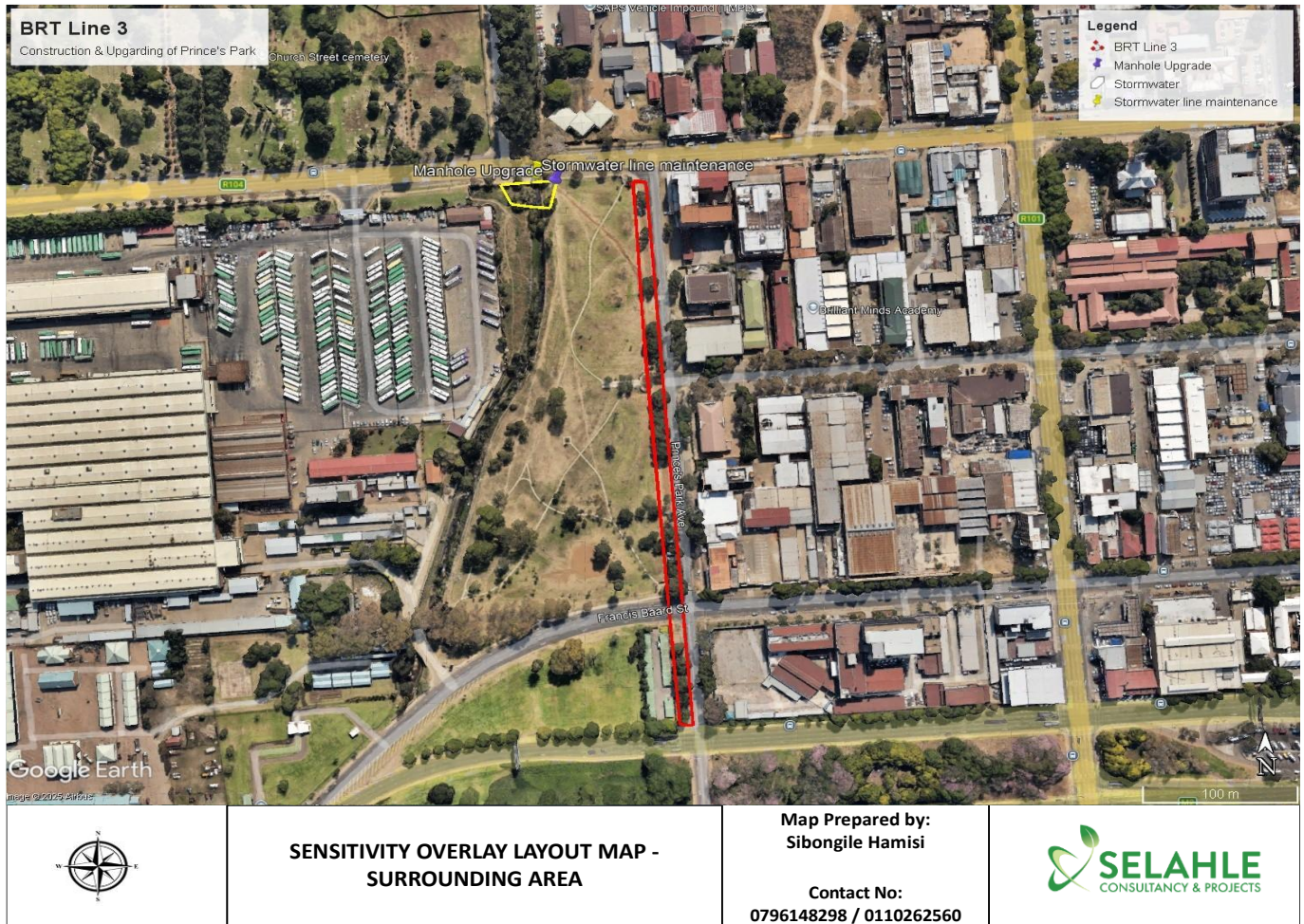


Figure 1: Site Locality Map



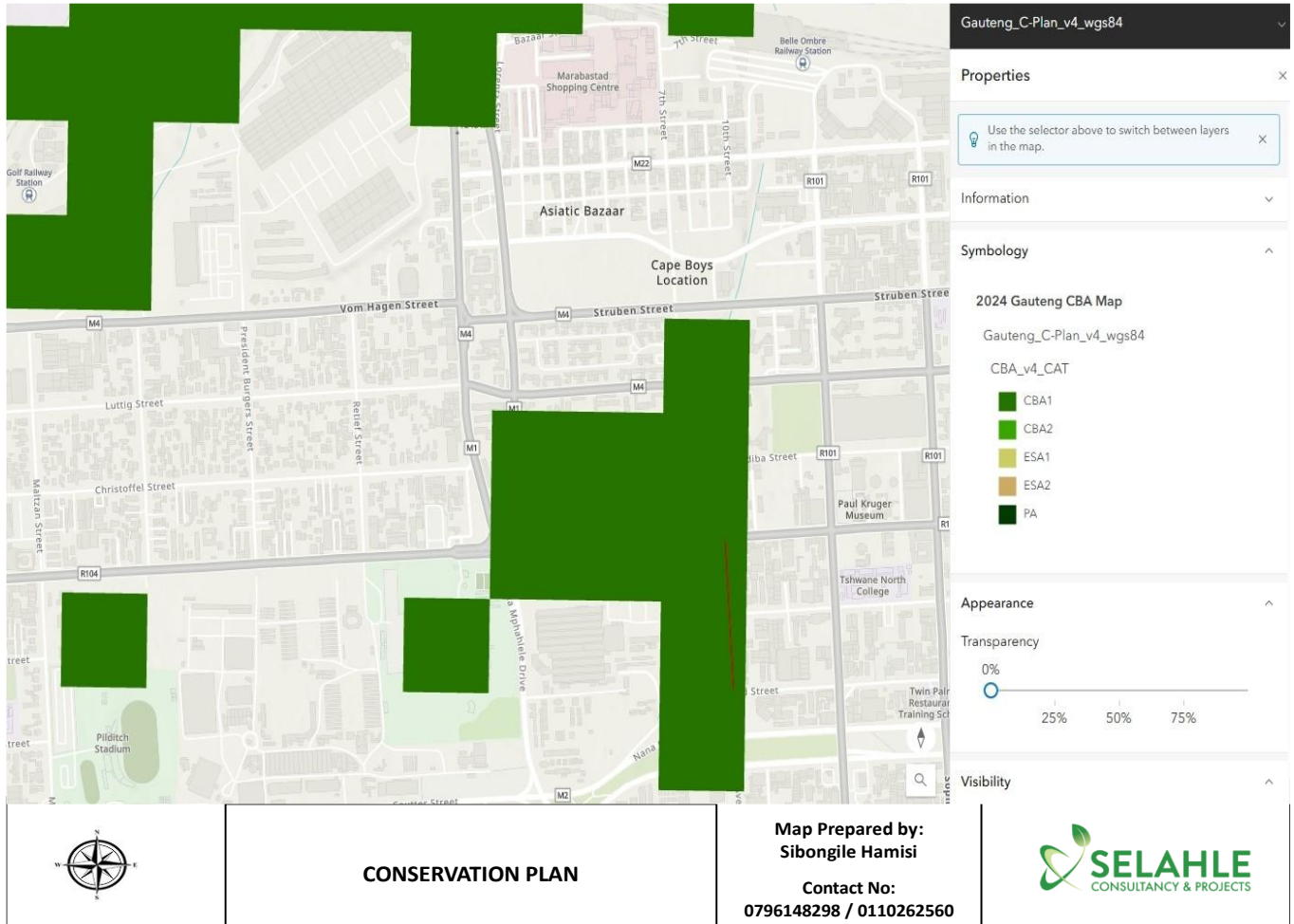


Figure 2: Conservation Plan Map